

38A London Street, Whitchurch, RG28 7LN  
Guide Price £425,000





38A London Street, Whitchurch,  
Guide Price £425,000

#### PROPERTY DESCRIPTION BY Mr Ross Beeden

Graham & Co are delighted to offer to the market Ringmore Cottage, a Stunning fully renovated three bedroom detached family home nestled discreetly in the heart of Whitchurch. offers easy access to a wealth of amenities, including shops, restaurants, and recreational facilities. The accommodation comprises an entrance porch, cloakroom, a spacious living room which leads to a stunning kitchen diner. Upstairs there are three generous double bedrooms and a modern fitted bathroom. Outside there is a beautifully manicured garden and allocated parking.







### Whitchurch

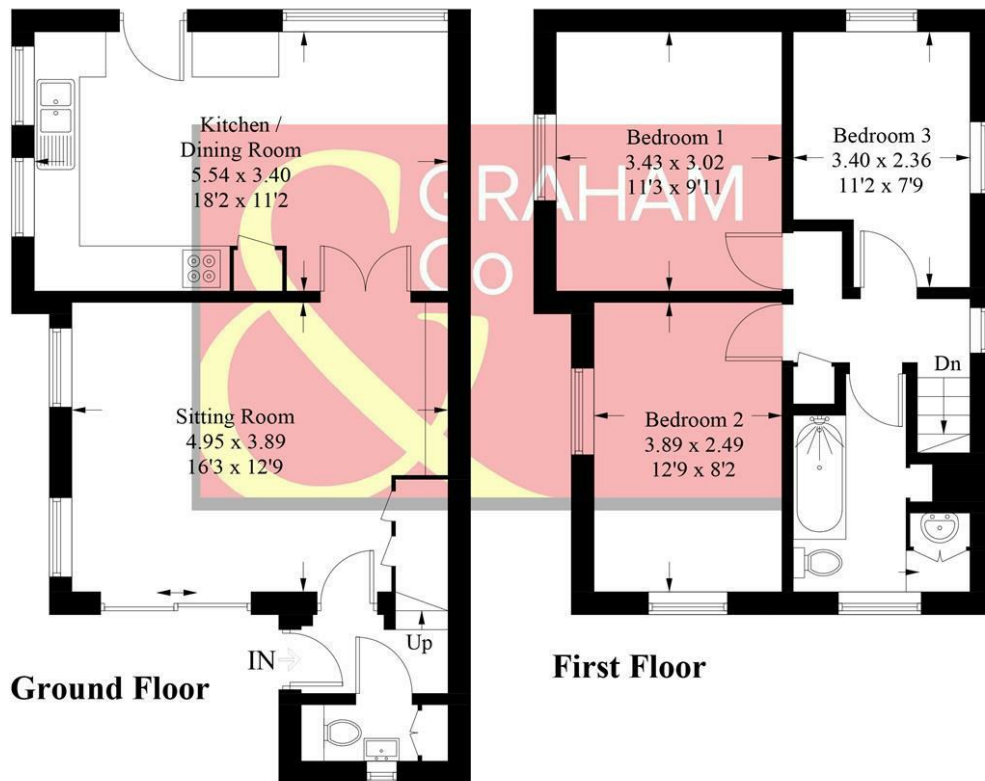
Whitchurch is situated on the River Test in North Hampshire with a population of approximately 4,500. The town is conveniently situated 13 miles south of Newbury, 12 miles north of Winchester, 8 miles east of Andover and 12 miles west of Basingstoke. Much of the town is in a conservation area, with an abundance of wildlife and local history. Whitchurch has a wide range of amenities, including; convenience stores, Post Office, bakery, coffee shop, many pubs and places to eat. The doctor's surgery, dental practice and veterinary clinic are all centrally located. Whitchurch boasts Good and Outstanding OFSTED-rated schools and nursery. There is a direct train line from Whitchurch station to London Waterloo, and also easy road links to the A34 and A303.





## London Street, RG28

Approximate Gross Internal Area = 82.8 sq m / 891 sq ft



PRODUCED FOR GRAHAM AND CO

Whilst every attempt has been made to ensure the accuracy of the floorplan, measurements of doors, windows and rooms are approximate. These plans are for representation purposes only as defined by RICS Code of Measuring Practice and used as such by any prospective purchaser. © Emzo Marketing (ID1080631)

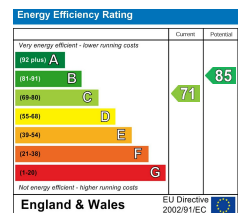
### MORTGAGE ADVICE

#### Across The Market Mortgages

An independent Mortgage brokerage offering expert advice from across the whole market. Whether you are a first-time buyer, home mover, remortgaging or buying a Buy-To-Let investment. Tristan can provide expert & reliable advice, in a clear jargon free language. Book a free consultation today.

E - [tristan@atmmortgages.com](mailto:tristan@atmmortgages.com) M - 07545320380

[www.atmmortgages.com](http://www.atmmortgages.com)



Tax Band: E



OPEN 7 DAYS

If you are considering selling your home please contact us today for your free no obligation valuation

IMPORTANT: we would like to inform prospective purchasers that these sales particulars have been prepared as a general guide only. A detailed survey has not been carried out, nor the services, appliances and fittings tested. Room sizes should not be relied upon for furnishing purposes and are approximate. If floor plans are included, they are for guidance only and illustration purposes only and may not be to scale. If there are any important matters likely to affect your decision to buy, please contact us before viewing the property.